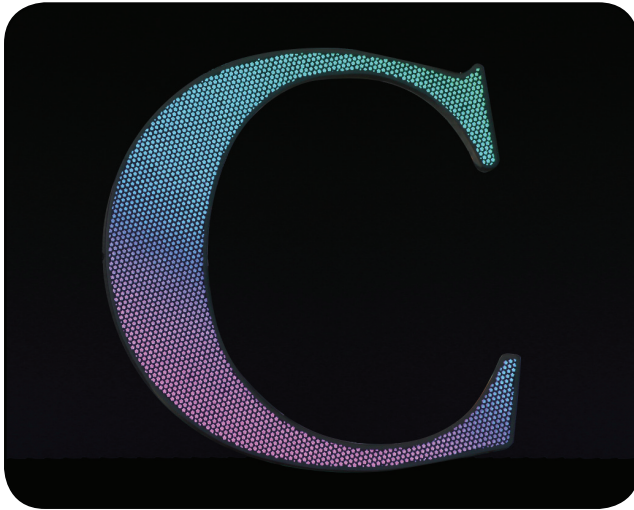


SmartPuck™ Series



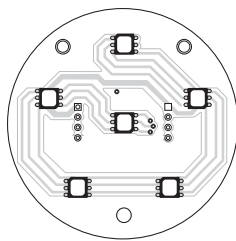
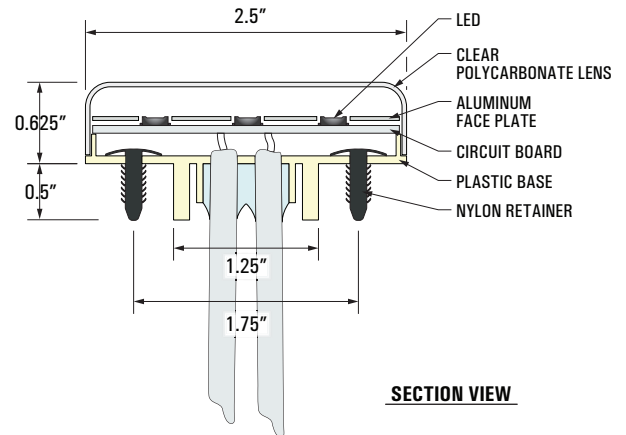
Key Features

- Provides alternative to high voltage and neon applications
- Surface mount diodes programmable in 16.7 million colors
- Capable of full animation
- Boards sealed within encasements
- Clear lens ensures smooth colors and durability
- Size and design provide infinite design possibilities
- Indoor or outdoor use
- Up to 55 pucks per power supply

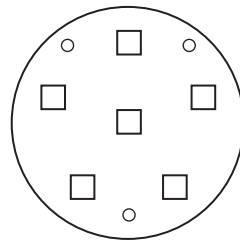
Puck size and design allows for infinite design possibilities

SP6-27 Specifications

Color options	16.7 million colors Available in white - 7000K and warm white - 3200K
Color resolution	3x8 bit (RGB)
LED type	Surface Mount Technology
# LED/puck	6
Pixel/puck spacing	2.75" minimum
Power supply	UL Class 2 w/27VDC output
Light output	Up to 3200 nit (RGB), 7000K 109 lm, 3200K 99 lm
Power consumption	1.75 watts per puck
Rated life	100,000 hours to half brightness
Environment	Indoor / outdoor
Controller	DMX, PrismView®, Stand Alone
Working temperature	-20° F to 150° F
Certification	UL recognized (E138960 vol. 2)
Face Plate (optional)	Custom Colors



TOP



FACE PLATE



Visit www.YESCO.com and find out more, or call us at 702.876.8080
YESCO LLC, 5119 South Cameron Street, Las Vegas, NV 89118

